

Prices

Refer our website for current prices

www.tourfraser.com.au

or call our office

07 5444 6957

Tour Departs

From Noosa - 6:00am - Return 5:30pm

From Rainbow Beach - 7:30am - Return 4:00pm

(Times are approximate)

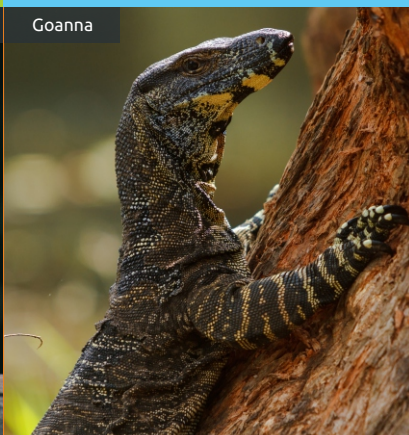


K'gari

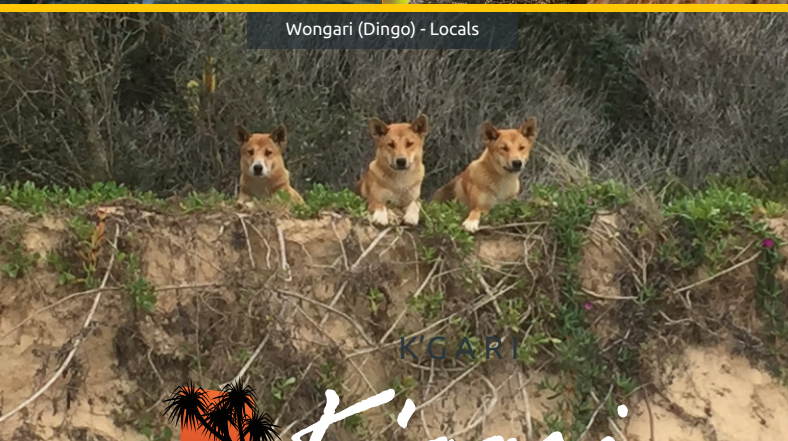
FRASER ISLAND NATURE TOURS



Kookaburras



Goanna



Wongari (Dingo) - Locals



K'gari

FRASER ISLAND NATURE TOURS

For Reservations Book Online

www.tourfraser.com.au

info@tourfraser.com.au

PO Box 1009 Mooloolaba Qld 4557

Book Now!

(07) 5444 6957

Remember this is a 4WD safari and may not be suitable if you have a bad back, are pregnant or prone to motion sickness. NOT RECOMMENDED FOR YOUNG CHILDREN. Dress comfortably – it's not a fashion parade! Don't forget your swimmers, towel, camera and a bottle of water. PLEASE NOTE: It is illegal to feed wongari (dingo).

General Conditions: Tours may vary due to tidal or weather conditions. We reserve the right to substitute vehicles and/or drivers and shall not be responsible of liable for death of/or injury to any person or loss of/or damage to any property due to persons negligence. As we are a small company and prepare all our food, cancellation fees have to apply: after 3pm day prior to tour 100% of fare - failure to board 100% of fare - Prices are subject to change. Codford Pty Ltd. Trading as Fraser Island Nature Tours - ABN 80 010 870 729



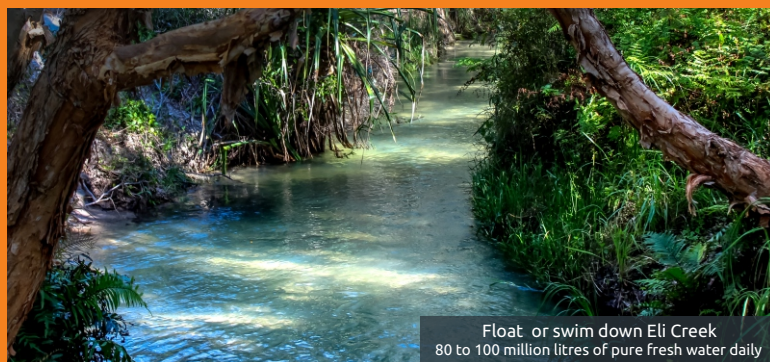
Lake Birrabeen



Maheno Shipwreck



Great Fraser Island Rainforest



Float or swim down Eli Creek
80 to 100 million litres of pure fresh water daily

Escape The Crowds

Experience the natural beauty of Fraser Island

The most comprehensive 4WD Day Tour to Fraser Island originating Sunshine Coast

Fraser Island is the world's largest sand island, 123 km long by 15 km wide. It was World Heritage Listed in 1992 after a bitter struggle between conservationists, sand mining and logging interests. It is composed almost entirely of vegetation covered sand, with over 40 freshwater lakes and dense rainforest.

Our tours take you into the best areas of this environmentally sensitive region and discover its precious eco-systems, abundant wildlife and natural beauty. Throughout the day you will touch on and appreciate nature's magnificent paradox. Seemingly endless golden beaches encompass towering hardwood forests, barren heathland, pristine rainforests, huge creeping sand blow deserts, crystal clear freshwater lakes, gurgling blood red streams, prehistoric ferns, mosaic coloured sands.

Centuries of intriguing history; from the most recent environmental conservation battles to sandmining and logging ...to the numerous shipwrecking disasters; the most famous being the 'Stirling Castle', in 1836 and the tale of 'Eliza Fraser'. Back to human habitation by the Butchulla, the indigenous people of Fraser Island and the legends of K'gari – such as the shattered Rainbow, Coloured Sands Dreamtime story.....to the beginnings beyond the ice ages - originating on the tablelands of Northern New South Wales.

K'GARI is in danger of being "loved to death". As an eco-tourism operator we play an important role in fostering an awareness in the need to preserve its natural beauty and fragile eco-systems. Regular stops are at picturesque beauty spots. Our commitment of "no compromise for quality" produces a memorable and enjoyable wilderness experience to one of nature's most beautiful and priceless treasures.



Same family owned and operated company for over 30 years. We "know our stuff" - let us share with you the unique experiences of world famous Fraser Island.



Float or swim down Eli Creek - the largest along the eastern coastline of Fraser Island

Aussie Style Bush Picnic

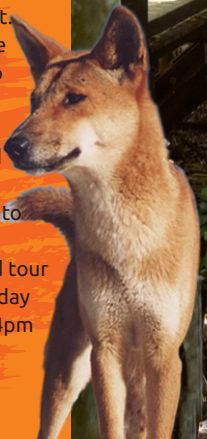
Fresh daily – tasty salad rolls: choice of ham, chicken or beef
Vegetarian Greek salad wraps
Healthy tropical fruit salad
Complimentary "icy cold" beer, wine, soft drinks & water.



Wongari (Dingo)

Tour Itinerary *Your adventure unfolds...*

- Once departed Rainbow Beach we make the Fraser Island crossing from Inskip Point to Hook Point by vehicle ferry. Keep a watch out for dolphins.
- Northward bound – travel by 4WD along the seemingly endless golden highway of 75 Mile Beach.
- Inland sand tracks through heathlands, towering hardwood forests, sub-tropical satinays, kauris etc.
- Swim and unwind in a crystal clear freshwater lake – Lake Birrabreen or Lake Boorangoora (Lake McKenzie) – famous for their turquoise colours and fine dazzling, white silica sands.
- Delicious "Aussie style" bush picnic lunch served with freshly made fruit salad. And don't forget the very welcome complimentary icy cold beer, wine and soft drinks.
- Pristine rainforest – luxuriant canopy of palms and vines.
- Eli Creek a popular swimming and picnic spot. This swift flowing stream pours an incredible 80-100 million litres of clear fresh water into the ocean every day.
- Shipwreck of the SS Maheno – built in Scotland 1904. It was a former New Zealand passenger ship and also a troop hospital ship during WW1. Now a permanent fixture to the Northern Beach since 1935.
- Return time varies due to the conditions and tour routes we have taken on this unforgettable day but usually return to Rainbow Beach about 4pm and Noosa at 6pm.



Natural Lush Rainforest Walk